



## Modular Qmix I/O-B Module

### DESCRIPTION

With Qmix I/O-B you will lift your CETONI setup into the next level of flexibility and automation.

By providing the desired communication channels of your choice (analog and digital), you are able to freely communicate with 3<sup>rd</sup> party devices or incorporate and monitor measurement signals (press. transducers, temperature signals) within QmixELEMENTS software. The module's terminal configuration can be customized and extended later on.

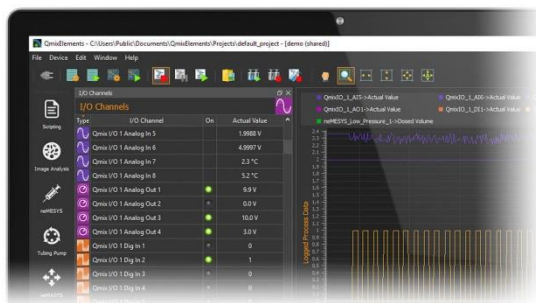


### VERSATILITY & SOFTWARE

The picture below shows a complex Qmix pump setup with integrated Qmix I/O module to incorporate external signals



With Qmix I/O module you are able to read analog inputs, analog pressure measuring inputs of the Qmix P modules or analog inputs of neMESYS syringe pump with one interface used across all devices. The module configuration is customized and adapted to any kind of application.



### MECHANICAL DATA

Weight .....	1.1 kg
Dimensions (L x W x H) .....	310 x 100 x 76 mm
Max. Number of Modules .....	15 (12 mm)

### ENVIRONMENT

Operating Temperature .....	0 – 50 °C
Storage Temperature .....	-20 – 75 °C
Operating Humidity .....	20 – 90 %, non-condensing
Storage Humidity .....	20 – 90 %, non-condensing

### ELECTRICAL DATA

Peak Power Consumption .....	180 W max.
Power Supply Voltage (Input) .....	24 V DC
Max. Current .....	7.5 A

### INTERFACES

Interfaces depending on mounted modules

### POSSIBLE BECKHOFF BUS TERMINALS

Digital in- and output terminals .....	5 V, 24 V
Analog in- and output terminals .....	0-20 mA, 0-10 V
Temperature measurements terminals .....	.....
.....	.....RTD, thermal elements